

 **RENSON®**  
 Creating healthy spaces

Wind-resistant vertical screens up to 22 m<sup>2</sup>  
 Fixscreen® 150<sup>EVO</sup>



Terrace covering with pivoted aluminium blades  
 Camargue®



Self-regulating acoustic ventilators  
 Invisivent® AKD & AKD Max



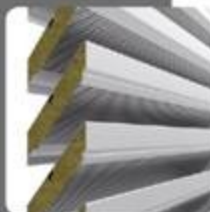
Movable folding shutters  
 Cilium®



Extreme weather resistant blades  
 Linius® L.050W



Acoustic louvres and blades



Project: Shure  
 Location: Eppingen, Germany  
 Architect: Mucha Architekten

## Wind-resistant vertical screens for glass surfaces up to 22 m<sup>2</sup>

### Fixscreen® 150<sup>EVO</sup>

- Wind-resistant in any position (Zip-system)
- Officially tested
- 2 box profiles: Softline and Square
- Discreet sealing-trim
- Surfaces up to **22 m<sup>2</sup>** - with optimal fabric tension
- Joinable up to 7 m
- Patented Connect & Go Technology: easy assembly and disassembly of the fabric roller barrel

• **Winner of the 2012 "Architecture Innovation Prize + Window and Door Façade"!**



▲ 2 Box profiles: Softline and Square



◀ Shure's project in Eppingen combines ecologically-sustainable architecture with innovative technologies. In order to prevent overheating on balconies and in offices, Fixscreen 150<sup>EVO</sup> wind-resistant screens were installed.

RENSON®  
 Architects



Internet portal for architects, engineering offices and planners.

You can register at:

[www.renson-architects.com](http://www.renson-architects.com)

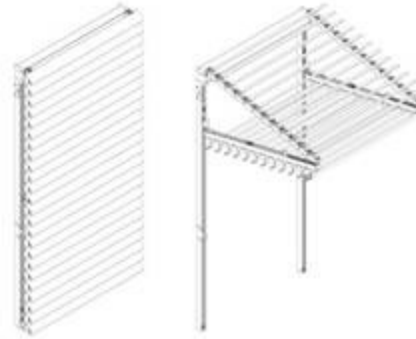
for fast and simple access to texts, drawings etc.



## Motorised folding shutters with aluminium blades

### Cilium®

- Dynamic sun protection
- Optimal protection against direct sunlight in vertical closed position, preventing overheating of buildings
- Opened folding element offers optimal use of incoming heat in the cold season
- Continuous linear blade view of the entire blade façade
- Can be delivered with Sunclips® EVO SE.096 and SE.130 blades



▲ RLB Raffaislandesbank - Klagenfurt (Austria)  
Architect Omarsiek & Omarsiek



◀ SBEC - Saint Brieux (FR) - Agence Lionel DUNET Architect

## Extreme weather resistant blades

### Linus® L.050W

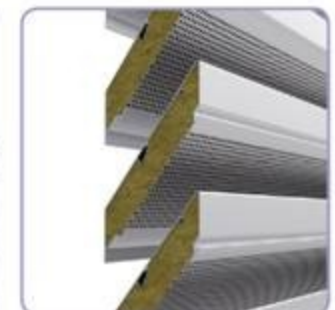
- Water resistant blades tested according to DIN EN 13030:2002-03
- Extruded aluminium blades
- K-Factor (resistance coefficient), yield: 10.47
- Physical free area: 57 %
- Easy installation thanks to clip system



## Acoustic ventilation louvres

### Types 445, 446 and 447

- Extruded aluminium blades
- Filled with non flammable mineral wool
- Sound reduction up to 17 dB(a)
- Officially certified



## Your outdoor in style !

### Terrace covering with rotating aluminium blades

#### Camargue®

- Aluminium structure with a watertight roof made of rotating aluminium blades
- Concealed drainage pipes to remove water
- Fully closable with integrated wind-resistant screens, glass side-walls or loggia® sliding panels.
- Free-standing, façade-mounted or integrated into an existing roof (without vertical columns)
- Unique dimensions up to 24 m<sup>2</sup>



Algarve®



Lagune®



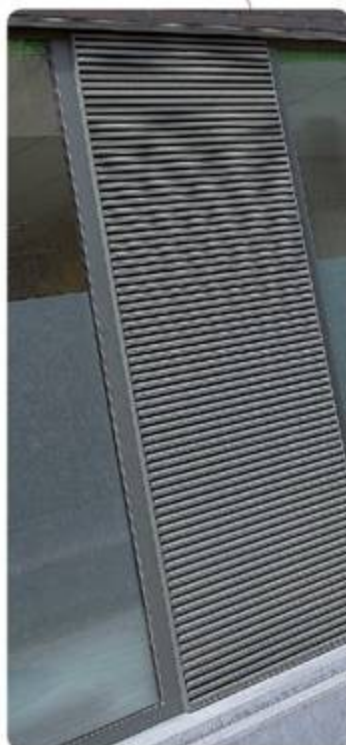
Camargue®



### Burglarproof ventilation louvres for nightcooling

#### Type 431 WK2

- Higher air flow
- Burglarproof according to Class WK2, prEN 1627 to 1630
- Water-resistant characteristics - Z-shaped blades
- Insect-resistant characteristics - stainless steel-mesh 304 - 2,3 x 2,3 mm
- Ideal as a louvre for intensive ventilation on the ground floor, where there is a higher risk of burglary



### Discreet integrated self-regulating acoustic ventilator with low U-value

DIN 1946-6 compliant



#### Invisivent®EVO AKD & AKD Max

- Thermally broken acoustic ventilation
- Automatic power-volume control by means of high-performing self-regulating flap
- Discreet overframe installation
- 20.3 m<sup>3</sup>/h/m air-flow at 2 Pa
- Sound reduction D<sub>n,w</sub> [C;C<sub>v</sub>] in dB (open up to 39 (0;2) for AKD and to 47 (-1;-4) for AKD Max
- U-value only 1,0 W/m<sup>2</sup>K



## Invisible aluminium frames for interior doors

### argenta® invisidoor®

- standard sizes supplied with a primer coating
- robust construction
- universally installable
- installation of frame and door at the same time
- delivered with magnetic lock, integrated grey seal and hidden, adjustable argenta® invisible hinges

## Invisible hinges for interior doors

### argenta® invisible neo

- Closed door and wall are flush so that the door-seal is not visible
- No visible screws
- Same hinge for left- and right-hand doors
- 3 Formats: S-5, M-6, L-7
- "Easy-Hook™" assembly system for simple installation and adjustment by only one person

**EASY  
HOOK™**

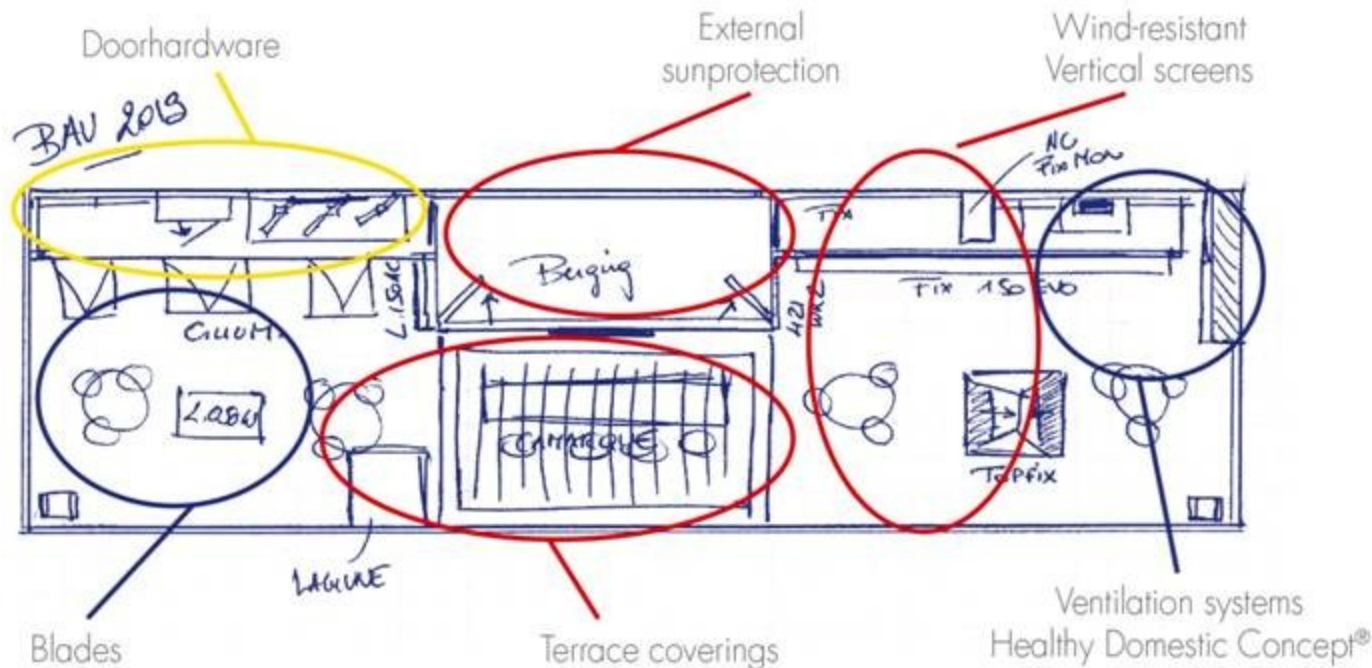


## RENSON® is building an Experience Centre ...

... with meeting and seminar rooms, a training suite and an auditorium for groups of up to 250 people. But the real attention-grabber will be an exhibition and experience space with a total surface area of 1250 m<sup>2</sup>. Opening scheduled for April 2013.



## RENSON® at BAU 2013



For further information:  
[www.renson.eu](http://www.renson.eu)

RENSON® NV  
Maalbeekstraat 10  
8790 Waregem • Belgium  
Tel : 0032 56 62 71 11  
Fax : 0032 56 60 28 51  
export@renson.net

