

București, 23.05.2019

Stimați Parteneri,

Vă aducem la cunoștință, cu deplină satisfacție, că **Universitatea Tehnică de Construcții București** (www.utcb.ro) împreună cu **Asociația Inginerilor de Instalații din România** (www.aiiro.ro) au câștigat în 2016 competiția pentru organizarea Congresului Mondial CLIMA 2019 în București, în perioada 24-29 mai 2019, sub deviza "**Built Environment facing climate change**" (www.clima2019.org).

CLIMA este un eveniment mondial de înaltă ținută tehnico-științifică, organizat o dată la 3 ani sub egida **REHVA** - Federația Europeană a Asociațiilor Naționale din domeniul Instalațiilor de Încălzire, Ventilare și Aer Condiționat și a Înaltului Patronaj al **ACADEMIEI ROMÂNE**. Atașăm acestei scrisori, jurnalul CLIMA 2019 ediția a II-a, în care puteți consulta programul congresului și alte detalii interesante despre eveniment (tematica, parteneri, keynote-speakeri etc).

Ținând cont de amploarea internațională și tematica actuală și cu impact puternic socio-științific, vă invităm să participați la acest congres de notorietate internațională, a cărui ediție se va desfășura în București, la Biblioteca Națională a României.



Rector UTCB

Prof.univ.dr.ing. Radu Sorin VĂCĂREANU



Președinte CLIMA 2019

Prof.univ.dr.ing. Sorin BURCHIU

Director General CLIMA 2019

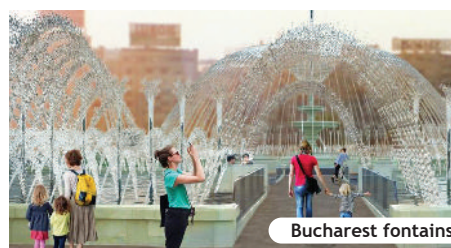
Conf.univ.dr.ing. Cătălin LUNGU
office@aiiro.ro

mob 0755093955, tel/fax 0212524295

The Earth's average surface temperature has risen by about 0.9 degrees Celsius since the late 19th century, a change driven largely by increased carbon dioxide and other human-made emissions into the atmosphere. Most of the warming occurred in the past 35 years, with the five warmest years on record taking place since 2010. The number of intense rainfall events, extreme storms, hurricanes and tornadoes has been increasing since 1950. This real scenario is completed by the fast declination of the extent and thickness of Arctic sea ice (over the past decades), the increasing by about 30 percent of the acidity of surface ocean waters (since the beginning of the Industrial Revolution), the risen of the global sea level by about 20 cm (in the last century). 97% of climate scientists agree that the climate warming tendency over the past century is very likely due to human activities.

The 13th REHVA Congress, CLIMA 2019, held from 26th till 29 May in Bucharest, Romania, will address, under the heading "Built environment facing climate change", four main topics, all related to the built environment - the largest energy consumer of any national or regional economy.

Prof. Assoc. Dr. Eng. & Econ. Cătălin Lungu
CLIMA 2019 Organizing Committee Chair



Bucharest fountains



Romanian National Library



Parliament House

TOPICS AND SUBTOPICS

Advanced HVAC&R&S Technology and Indoor Environment Quality

- Criteria for thermal environment and ventilation
- HVAC in residential buildings
- HVAC in schools; overheating prevention
- HVAC for special environments
- Demand controlled, hybrid and passive HVAC systems
- Filtration, air cleaning and air distribution
- PM and contaminants in outdoors and indoors
- Solar thermal and PV systems
- Heat pumps and refrigeration
- Low energy heating and cooling systems
- District heating and district cooling
- Quality of the building use: indoor environment comfort, productivity, safety and health
- Natural and mechanical smoke extraction systems
- Water and wastewater systems and components
- Other advanced HVAC&R&S systems components: generation, distribution, storage, emission
- OTHERS

High Energy Performance and Sustainable Buildings

- Low and zero energy building case studies
- Energy efficient renovation of existing buildings
- Predicted and real energy performance of buildings
- Energy performance requirements, compliance assessment and cost optimality
- Primary energy & weighting factors for energy requirements
- Simulation models and predictive tools for the buildings HVAC, IEQ and energy
- Building components and double skin facades
- Daylight and solar shading
- Occupant behaviour and energy demands in buildings
- User-HVAC-building interaction
- Future and Emerging Technologies (FET): Nano-, micro- and bio-technologies for buildings components and HVAC systems
- Mandatory and voluntary certification and labelling schemes for new and existing buildings
- Renovation of historic buildings
- Construction skills for the nZEBs
- Life-cycle services, commissioning, operation and maintenance of HVAC systems
- OTHERS

Information and Communication Technologies (ICT) for the Intelligent Building Management

- New ICT-based solutions for systems and building automation
- Energy Efficiency through behavioural adaption based on ICT solutions
- Indoor Environment control with advanced BMS solutions
- Sensors and methods to control and authenticate indoor environment
- Advanced fault detection and diagnostics
- Big data and machine learning applications in buildings
- Integrated BIM solutions for buildings and systems
- Digitalization of buildings equipment
- Smoke control pressure systems
- OTHERS

Sustainable Urbanization and Energy System Integration

- Grid interaction of nZEB, green and passive buildings
- Architectural design integration
- Research and development infrastructures for buildings
- Health, demographic change and well being
- Climate action, environment, resource efficiency and raw materials
- Energy management and distributed energy systems (heat and power generation, district heating and cooling)
- Innovative heating and cooling solutions using geothermal energy
- Large scale and seasonal thermal storage
- Secure, clean and efficient energy
- Smartness indicators
- Energy performance of districts and building stock
- From sustainable and smart buildings to sustainable and smart cities
- Demonstrating innovative nature-based solutions in cities
- Enhancing the capacity of public authorities to plan and implement sustainable energy policies and measures
- OTHERS



Prof. Dr. Eng.
Radu Văcăreanu
UTCB Rector

The Technical University of Civil Engineering of Bucharest (UTCBC) is one of the Romanian co-organizers of CLIMA 2019, the 13th REHVA HVAC World Congress. This outstanding professional and scientific event will be held on 26-29 May 2019, in Bucharest.

Through CLIMA 2019, our university is fully motivated and committed to promote the best knowledge on "built environment facing climate change", to boost the worldwide cooperation in these fields and to push the frontiers of knowledge aiming at an enhanced societal resilience.

UTCBC will do its best to make sure that CLIMA 2019, hosted in Romania, will be a remarkable event fully adhering to the highest standards of quality set up by REHVA. We look forward to welcome you all in our wonderful country and to offer you an outstanding experience of lively and fresh Eastern Europe!



Prof. Dr.
Stefano Corgnati
REHVA President

CLIMA Congress is deeply part of REHVA tradition and its wide recognition within the international scientific and technical community is a clear indicator of the centrality of this event for the HVAC sector.

The challenges addressed to buildings to drive a change in the approach to reduce energy consumption and environmental impacts, give to our sector a key responsibility: we must work to keep high indoor environmental quality levels but reducing energy uses, in particular the use of non-renewable energy sources.

The constant research of energy demand reduction, energy efficiency increase and renewable energy sources integration is a stable paradigm. At the same time, the opportunities opened by the ICT and IOT penetration in buildings are fundamental for a better understanding of the building energy metabolism: the connection with the HVAC systems can open a new season for the building energy optimization.

In this scenario, CLIMA 2019 can stimulate an open and critical discussion about the leadership of HVAC sector in leading the transition to post-carbon society.



Prof. Dr. Arch.
Marian Moiceanu
UAUIM* Rector

People have always spoken about poverty, money, sex, politics and...football. But, in more recent times, the new conversation topics include: diminishing of natural resources, climate change, and their multiple effects. Most of us just talk, but to our salvation, some get directly involved with finding solutions.

A brief history of the active involvement is not complete without the Growth Limitations Report, presented back in 1972 by Dennis Meadows of the Massachusetts Institute of Technology, poignant member of the Rome Club. The prestigious organization, founded by Aurelio Peccei, set a trail blazing direction meant to raise awareness towards the future of the planet, and against suicidal ignorance of human kind towards its own condition, as stated by the founder himself. The report called the alarm, foreseeing the issues and making an appeal for resolution through human engagement. This is the same thing that is happening today when climate change is showcased all around the globe as source for catastrophe and panic. It's therefore not a surprise that, the vision of some towards the future of the mankind and planet is grim. That is why being aware of the phenomena and of the hazards induced by them, as well as the engagement of specialists towards developing viable solutions, are now mandatory in all areas.

CLIMA 2019 World Congress sets an important example in terms of engagement. The Congress is defined as an important forum that brings together specialists to communicate, debate and find solutions for the existing and upcoming challenges that the human kind is facing. I believe that the engineers and architects will form, as they always have throughout history, the Avangarde of this movement of salvation.

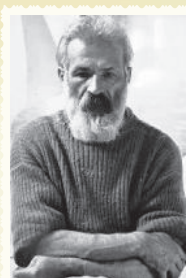
*Urbanism and Architecture University „Ion Mincu”

All CLIMA 2019 accepted papers will be published in the E3S Proceedings. CLIMA 2019 best full-pappers will be recommended for publication in the following ISI indexed journals.

- Building and Environment Journal (Elsevier/RG Journal Impact 5.05)
- Journal of Building Performance Simulation-IBPSA (Taylor & Francis/ RG Journal Impact 2.6)
- Science and Technology for the Built Environment-ASHRAE (RG Journal Impact 1.18)
- Building Services Engineering Research and Technology-CIBSE (RG Journal Impact 0.36)

ROMANIAN WORLD KNOWN PERSONALITIES

CONSTANTIN BRÂNCUȘI

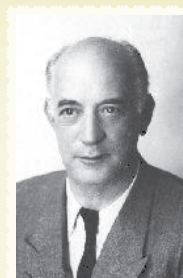


was a Romanian sculptor, painter and photographer. Considered a pioneer of modernism, Brâncuși is called the patriarch of modern sculpture. The Endless Column, Bird in Space, The Newborn, The Kiss, Mademoiselle Pogány and Sleeping Muse, are items of his famous work.



GEORGE ENESCU

was the most important Romanian composer, violin teacher of Yehudi Menuhin, he conducted the Orchestre Symphonique de Paris in 1937, and the New York Philharmonic between 1937 and 1938.



HENRI COANDĂ

was an inventor, aerodynamics pioneer and builder of an experimental aircraft - the Coandă-1910. He described it in the '50s as the world's first jet. It was a controversial claim disputed by some and supported by others. He designed a "flying saucer" & discovered the Coandă effect of fluid dynamics.

SPONSORS



Daikin Industries, Ltd. is a Japanese multinational air conditioning manufacturing company headquartered in Osaka. It has operations in Japan, China, Australia, India, Philippines, Southeast Asia, Europe, North America, and South America. Daikin is the inventor of variable refrigerant volume systems (or VRV by Daikin air conditioning) and an innovator in the split system air conditioning market.



The main field of activity of P.A.B. ROMANIA is manufacturing commercial, industrial, agricultural buildings, civil buildings of general interest, entertainment and sports places. Our delivery services cover the entire spectrum of activities from simple manufacturing to the complete delivery of the project, along with the full range of services such as design, preconstruction and manufacturing to the expiration of the warranty of projects.



Since being established in the UK in 2003 Imtech has, through acquisition and organic growth, evolved to become one of the largest technical services providers in the UK and Ireland. We have aligned our businesses into distinct work streams, based on our capabilities, to ensure we are able to support the current and future needs of our clients, employees and stakeholders.



The company CONSTRUCTII ERBASU, was established in July 1990, as small company with full Romanian capital, having 20 employees. Since 1991, the company, keeping the character of a family business, has turned into a joint stock company, and as shareholders have been co-opted a number of employees who worked from the beginning within the company and who have contributed fully to its development.



KEYNOTE SPEAKERS



Prof.assoc.dr.arch.
Cătălina TURCU
The Bartlett, UCL
UK

Sustainable
Urbanization and
Energy System
Integration



Prof.dr.
Shin-ichi TANABE
Waseda University
JAPAN

Importance of Environ-
ment, Social and Govern-
ance in Building Indus-
tries -Toward Zero Energy
Building with High Indoor
Environment Quality



Prof.dr.eng.
Francis ALLARD
Université de La Rochelle
FRANCE

Assessing Urban Heat
Islands: stakes and
recent advances in
design solutions and
technology



Mika HALTUNEN
Halton Group Chairman
FINLAND

From Wellbeing Indoors
to Built Environment
Facing Climate Change
and beyond



Dr.eng.
Hui ZHANG
UC Berkeley
USA

Going for Maximum
Efficiency in Thermal
Comfort



Dr.eng.
Werner R. LUTSCH
Euroheat&Power President
GERMANY

District Heating and
CHP - Clean Energy for
all Europeans



Prof.dr.eng.
Bjarne W. OLESEN
Technical University
DENMARK

International Standards
for Indoor
Environmental Quality:
Similarities and
Differences



Prof.dr.eng.
William P. BAHNFLETH
Indoor Environment Center
USA

Current Status and
Future Prospects of
Optical Radiation for
Infection Control



Dr.eng.
Ovidiu NORAN
Griffith University
AUSTRALIA

Effective Energy
Transition: An Adaptive
Architecture View for
Sustainable Long-term
Management

Sunday, 26 th May			Monday, 27 th May			Tuesday, 28 th May			Wednesday, 29 th May		
			20'	IMTECH Belgium	8:30-8:50	20'	PAB Romania	8:30-8:50	40'	William P. BAHNFLETH	8:30-9:10
			40'	Shin-ichi TANABE	8:50-9:30	40'	Hui ZHANG	8:50-9:30	10'	Sponsor (free slot)	9:10-9:20
			20'	Sponsor (free slot)	9:30-9:50	20'	EU representative (TBC)	9:30-9:50	40'	Ovidiu NORAN	9:20-10:00
			10'	EUROVENT CERTITA	9:50-10:00	10'	HALTON Finland	9:50-10:00			
			150'	Sessions & workshops	10:30-13:00	150'	Sessions & workshops	10:30-13:00	150'	Sessions & workshops	10:30-13:00
PLENARY SESSION 1			40'	Francis ALLARD	14:00-14:40	40'	Werner R. LUTSCH	14:00-14:40	150'	Awards ceremonies, plenary presentations & closure speech	14:00-16:30
70'	OPENING SPEECH	16:30-17:40	10'	AMTEH Romania	14:40-14:50	10'	ISHRAE India	14:40-14:50			
40'	Cătălina TURCU	17:40-18:20	40'	Mika HALTUNEN	14:50-15:30	40'	Bjarne W. OLESEN	14:50-15:30			
20'	DAIKIN Europe	18:20-18:40	120'	Sessions & workshops	16:00-18:00	120'	Sessions & workshops	16:00-18:00			
20'	REHVA Representative	18:40-19:00									

GUEST SCIENTIFIC EDITORS



Prof.dr.
Shin-ichi TANABE
Waseda University
JAPAN



Doctor
Hui ZHANG
UC Berkeley
USA



Prof.Dr.
Jarek KURNITSKI
Tallinn University of Technology
ESTONIA



Prof.Dr.
Manuel GAMEIRO da SILVA
Universidade de Coimbra
PORTUGAL



Prof.assoc.dr.
Ilinca NASTASE
UTC
ROMANIA



Prof.dr.
Guangyu CAO
Faculty of Engineering
NORWAY



Prof.assoc.dr.
Pawel WARGOCKI
DTU Civil Engineering
DENMARK



Prof.Dr.
Livio MAZZARELLA
Politecnico di Milano
ITALY



Prof. Dr.
Christian INARD
Université de La Rochelle
FRANCE

INSTITUTIONAL
INTERNATIONAL
PARTNERSINSTITUTIONAL
ROMANIAN
PARTNERSMEDIA
PARTNERSROMANIAN WORLD
KNOWN PERSONALITIES

AUREL VLAICU

was an engineer, inventor, air-
plane constructor and early
pilot. On September 28, 1910,
as a part of the fall military ex-
ercises, he flew his airplane
from Slatina to Piatra Olt car-
rying a message, an early in-
stance of an airplane being
used for military purposes.



ANASTASE DRAGOMIR

was a distinguished
inventor, most famous
for his "catapultable
cockpit" patent as an
early form of ejection
seat, preceded by
Everard Calthrop's
1916 compressed air
ejection seat.



TRAIAN VUIA

was an inventor and aviation pion-
eer who designed, built and tested
the first tractor monoplane. He
was the first to demonstrate that a
flying machine could rise into the
air by running on wheels on a nor-
mal road. He is credited with a po-
wered hop of 11 m made in 1906.
Later, he designed helicopters.



clima2019



clima2019



clima2019



clima2019






clima

www.clima2019.org
info@clima2019.org

CONGRESS PARTNERSHIP OPPORTUNITIES

Sponsorships go fast, secure yours today!

1. Select the sponsored items that are the best fit for your company.
2. Complete the sponsorship commitment form and terms and conditions form, and return them with your company logo. www.expo.clima2019.org/#sponsorship-packages
Please send one logo in .jpg or .pdf format and one logo in a vector .eps file.

no	SPONSORSHIP LEVEL			
		DIAMOND 35000 € + VAT	EMERALD 15000 € + VAT	RUBY 7500 € + VAT
	CLIMA 2019 activity	4 seats	4-6 seats	min. 5 seats
1	Announcement calls (on soft and hard copies and on the website)	Big LOGO	Medium LOGO	Small LOGO
2	Presentation during plenary sessions	15 min	7 min	-
3	People number of the sponsors' team	max. 4	max. 3	max. 2
4	Webcast brochure, electronic mailings and on the official webcast site	Big LOGO	Medium LOGO	Small LOGO
5	CLIMA website	LOGO on the home page and on sponsors page + presentation	LOGO on the sponsors page + presentation	LOGO on the sponsors page + presentation
6	Promo campaigns on Facebook, Twitter, LinkedIn, Instagram	LOGO + presentation	LOGO in sponsors list	LOGO in sponsors list
7	CLIMA 2019 sponsor AWARD	YES	YES	YES
8	Advertisement in international and national journals	Dedicated page	LOGO	LOGO
9	Posters, banners and rollups	Big LOGO	Medium LOGO	Small LOGO
10	Notepads	LOGO	-	-
11	Proceedings book and DVD/mem stick	Big LOGO	Medium LOGO	Small LOGO
12	Entrance sponsor panel	Big LOGO	Medium LOGO	Small LOGO
13	Pre-taped speaking opportunity during live webcast	YES	-	-
14	Exhibition booth	12 sqm	6 sqm	4 sqm
15	Congress halls	8 BANNERS/FLAGS/ROLLUPS	5 BANNERS/FLAGS/ROLLUPS	3 BANNERS/FLAGS/ROLLUPS
16	Lunch, Cocktail, Dinner rooms	8 BANNERS/FLAGS/ROLLUPS	5 BANNERS/FLAGS/ROLLUPS	2 BANNERS/FLAGS/ROLLUPS

Other Sponsorship Items For CLIMA 2019 Congress

1	Opening Reception	Exclusive	20000 Euro
2	Audio Visual	Exclusive	20000 Euro
3	Coffee Break	6 Pckgs	3000 Euro
4	Congress Lunch	3 Pckgs	15000 Euro
5	Wi-Fi Hot Spot	Exclusive	15000 Euro
6	Congress Bags	Exclusive	15000 Euro
7	Student Volunteer Support	2 Pckgs	5000 Euro
8	Congress Lanyards + Notepads	Exclusive	5000 Euro
9	Congress pens	Exclusive	5000 Euro
10	Full cover of the congress program	Exclusive	5000 Euro

*all prices are without VAT (19%)

Find an academic or business partner for your projects!

Organizing the B2B session, we offer you the exceptional occasion to meet potential academic or business partners for your projects and to make the most of your time at the congress by:

Facilitating your meetings with international companies (15...30-minute slots) & Introducing you to potential partners and presenting the opportunity to advance your business (present your company, your projects and the technological or business collaboration you are expecting to concretize).

Important Dates:

- Register until the 15th of April 2019
- Book meetings until the 1st of May 2019
- Final e-agenda will be published the 15th of May 2019
- B2B meetings will take place on 27th and 28th of May 2019

Location: Romanian National Library, 22nd Bdul Unirii, Bucharest, Romania

Contact: Alina Bugean, Project Manager, TRIMA EVENTS, alina.bugean@trima.ro, +40756162100

B2B SESSIONS

fee/30 min: 100 € + VAT

WORKSHOPS

Services Provided

- 1) A slot of max 2,5 hours in the official program of the CLIMA 2019 congress
- 2) Equipped room (sound system with 2 microphones, projector, screen, laser pointer, flip-chart and notebook)
- 3) The workshop announced (with name and logo of the supporter/supporters)
 - ☒ in the official program of the congress
 - ☒ in REHVA newsletter - 2 times
 - ☒ in REHVA bulletin - 2 times
 - ☒ in REHVA journal - once
- 4) The workshop summary will be published (with supporter/supporters name)
 - ☒ on REHVA & CLIMA website
 - ☒ in REHVA journal
 - ☒ in the congress e-newsletter (at least 2 times)
 - ☒ on social-media (at least 2 times)
- 5) A REHVA Report published after the event, with workshop summaries - 20 REHVA Reports

- will be sent to the workshop supporter(s)
- 6) A full page advertisement in the summary report
- 7) Free full registration at the congress for the workshop chair(s)
- 8) Possibility to place one or more roll-ups/banners in the workshop room and/or in front of the workshop room
- 9) Possibility to distribute promotional materials during the congress
- 10) Possibility to co-organise in team (maximum 4 members and 2 co-chairs) a workshop. Journal advertisement will be shared.
- 11) 5-10% discount for an exhibition booth rent.



Announced CLIMA 2019 Workshops

	Daikin award competition (best 8 posters)	29 May 2019 10:30-13:00
	Third-party confidence for building projects: Eurovent tools to deliver value	27 May 2019 10:30-13:00
	The value of good performance - how high-performance buildings protect the asset value and increase your bottom line	27 May 2019 10:30-13:00
	NZEB concepts in Europe and Japan	27 May 2019 10:30-12:00
	Evidence-based ventilation needs and development process of future standards	29 May 2019 10:30-12:00
	Dissemination and roll-out of the set of EPB standards. Asking feedback from practitioners	27 May 2019 16:00-17:30
	From regular inspection to BACS supported HVAC system technical monitoring, commissioning and certification	28 May 2019 10:30-12:00
	Towards optimized performance, design and comfort in hybrid GEOTABS buildings	28 May 2019 16:00-17:30
	Building commissioning in Europe	27 May 2019 16:00-17:30
	Why people matter? Exploitation strategies for people-centred design	27 May 2019 16:00-17:30
	The power of the cloud	27 May 2019 10:30-13:00
	Advanced HVAC/R Measurement Technology and Indoor Air Quality Monitoring	29 May 2019 10:30-13:00
	Societal changes and the impact on energy consumption (TBC)	27 May 2019 15:30-18:00
	Energy in Buildings Paths in Europe and China - Two Zooming Experiences	28 May 2019 10:30-12:00
	BIM for the built environment	29 May 2019 10:30-13:00
	Indoor Environment Design for Smart Buildings	28 May 2019 10:30-13:00
	Costs and benefits of antibacterial filter and its effects on energy saving, human health and worker productivity	28 May 2019 15:30-18:00
	Energy renovation of building stock towards nZEB levels: How to prepare the market for the challenge?	28 May 2019 10:30-13:00

ROMANIAN WORLD KNOWN PERSONALITIES



NICOLAE VASILESCU-KARPEN

invented the Karpen Pile, which is claimed to be a battery that has provided continuous energy for over 60 years. Some newspapers describe it as a perpetual mobile. Most scientists disagree since such a device would violate the Second law of thermodynamics.



EMIL RACOVITĂ

was a biologist, zoologist, speleologist, explorer of Antarctica and the first biologist in the world to study the arctic life. He was one of the most noted promoters of natural sciences in Romania.



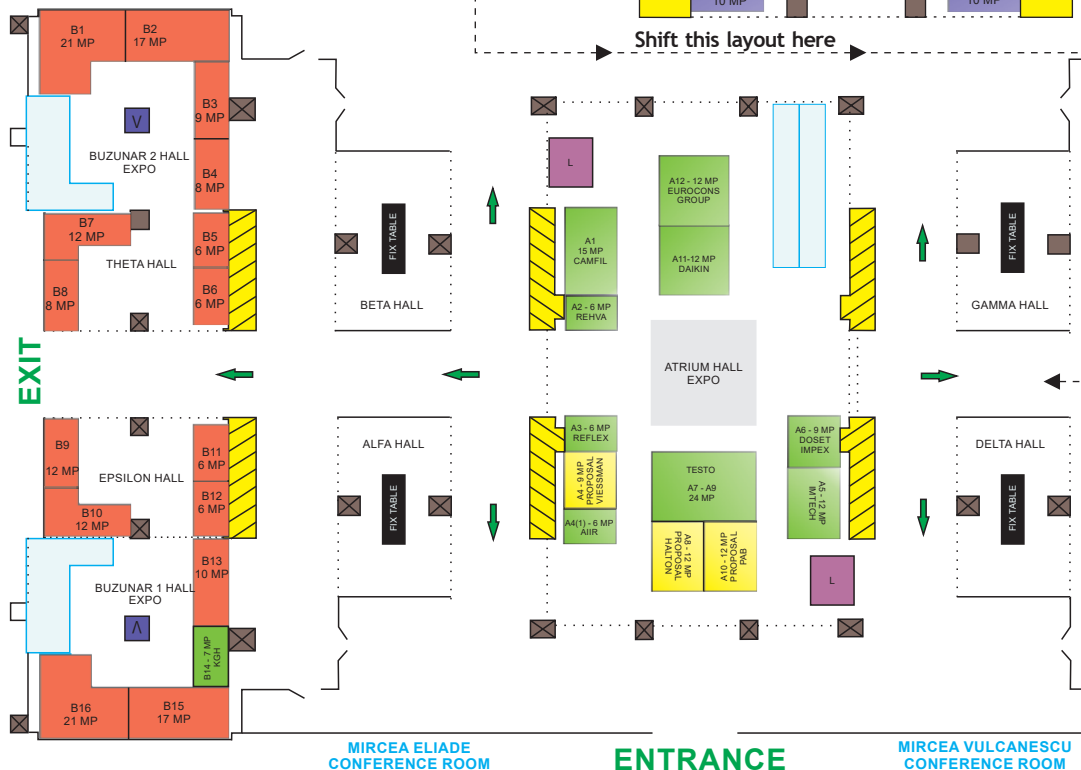
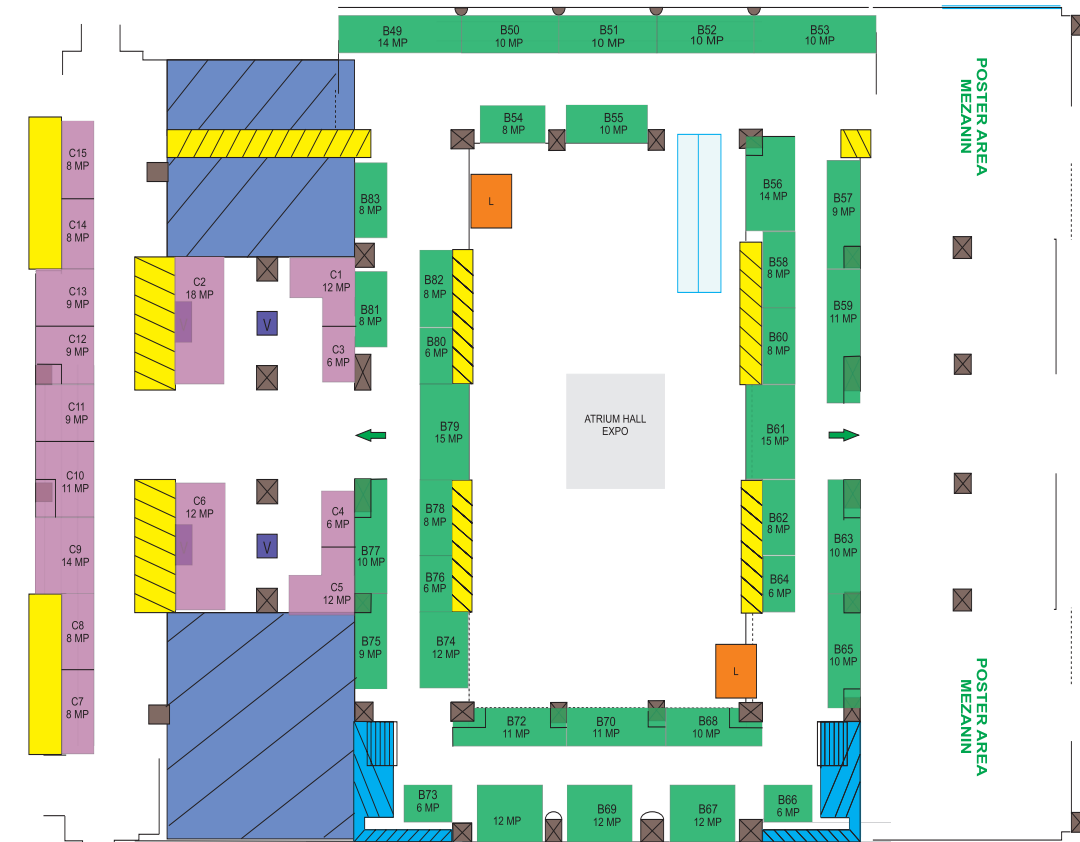
PETRACHE POENARU

was a mathematician, physicist, engineer, inventor, founder of the Philharmonic Society, the Botanical Gardens and the National Museum of Antiquities in Bucharest. While a student in Paris, he invented the world's first fountain pen, for which the French Government issued a patent on 25 May 1827.

GROUND FLOOR



MEZANIN FLOOR



Register today as exhibitor to CLIMA 2019

We invite you to register as exhibitors to CLIMA 2019 EXPO that will take place under the motto "Prospection into the future".

The +2000 sqm exhibition area is collocated with the leading international scientific HVAC congress CLIMA 2019 in the beautiful building of the Romanian National Library. The event is a result of the ambitious goal of creating a high-profile opportunity for companies of the sector to present their flagship products and

exchange knowledge and innovative ideas in a highly professional and specialized setting.

CLIMA 2019 EXPO is a showcase that „can not be missed” for the most extraordinary technological novelties at which environmental sustainability is not only examined as an ethical commitment but also as a concrete business opportunity prone to interesting prospects of development in the near future.

Important dates and deadlines

- March 15, 2019 Early Registration as Exhibitor
- April 15, 2019 Deadline for ordering
 - ✓ Technical supplies
 - ✓ Flowers
 - ✓ Hostesses
 - ✓ Company description for the printed program
 - ✓ Promotional materials & logos
 - ✓ Exhibitor access registration & badge
 - ✓ Furniture

- ✓ Lead retrieval APP etc.
- ✓ Booth catering

- April 30, 2019 Late Registration as Exhibitor Deadline for submitting stand plans for general approval of spaces with more than 20 sqm or 2.50m height to the venue
- May 10, 2019 Deadline for submitting the freight, clearing and loading information
- May 26-29, 2019 CLIMA 2019 EXPO & CONGRESS

Exhibition Registration / Rates

Registration Fee	Eur 80	for all exhibitors
SCHELL SCHEME Booth	EUR 180/sqm	spaces include 3 staff exhibitor registration
SPACE ONLY Booth	EUR 111/sqm	spaces include 1 staff exhibitor registration
SCHELL SCHEME Booth	EUR 150/sqm	spaces include 2 staff exhibitor registration
SPACE ONLY Booth	EUR 93/sqm	spaces include 1 staff exhibitor registration
SCHELL SCHEME Booth	EUR 120/sqm	spaces include 1 staff exhibitor registration
SPACE ONLY Booth	EUR 75/sqm	no staff exhibitor registration included
Additional Booth Staff	Eur 175/pers	

*all prices are without VAT (19%)

Bookings

Your orders for exhibition space, technical supplies and most of the exhibition services have to be ordered via the CLIMA 2019 EXHIBITOR REGISTRATION FORM & CONTRACT which is on the website www.expo.clima2019/info-for-exhibitors/#registration-documents.

Each exhibitor will receive a separate e-mail containing instructions / detailed information on how orders can be finalized.

The following services can be ordered: technical supplies, furniture for rent, exhibition space, lead

retrieval apps, hostesses, plants and flowers etc.

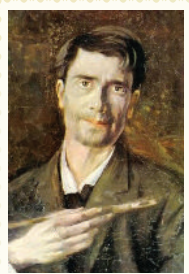
Downloads

Maps, manuals and forms mentioned in this manual can be accessed via the website in the "Info for Exhibitors" section.

Contact

TRIMA EVENTS

Alina Bugean, Project Manager,
alina.bugean@trima.ro, +40756162100

ROMANIAN WORLD
KNOWN PERSONALITIES

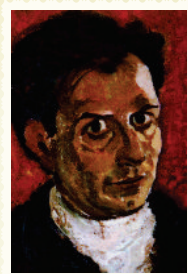
ȘTEFAN LUCHIAN

was a painter, famous for his landscapes and still life works. In 1900, Luchian contributed two pastels to Romania's Pavilion at the World Fair, and in the same year suffered the first symptoms of multiple sclerosis, which was to haunt him for the rest of his life.



NICOLAE GRIGORESCU

was one of the founders of modern Romanian painting. In 1877 he was called to accompany the Romanian Army as a "front-line painter" in the Romanian War of Independence.



NICOLAE TONITZA

was a painter, engraver, lithographer, journalist and art critic. Drawing inspiration from Post-impressionism and Expressionism, he had a major role in introducing modernist guidelines to local art. A participant in several national exhibitions and World Fairs, he painted his last works around Balchik.



clima2019



clima2019



clima2019



clima2019



clima

www.clima2019.org
info@clima2019.org

REGISTRATION PACKAGES CONGRESS OVERALL PROGRAM

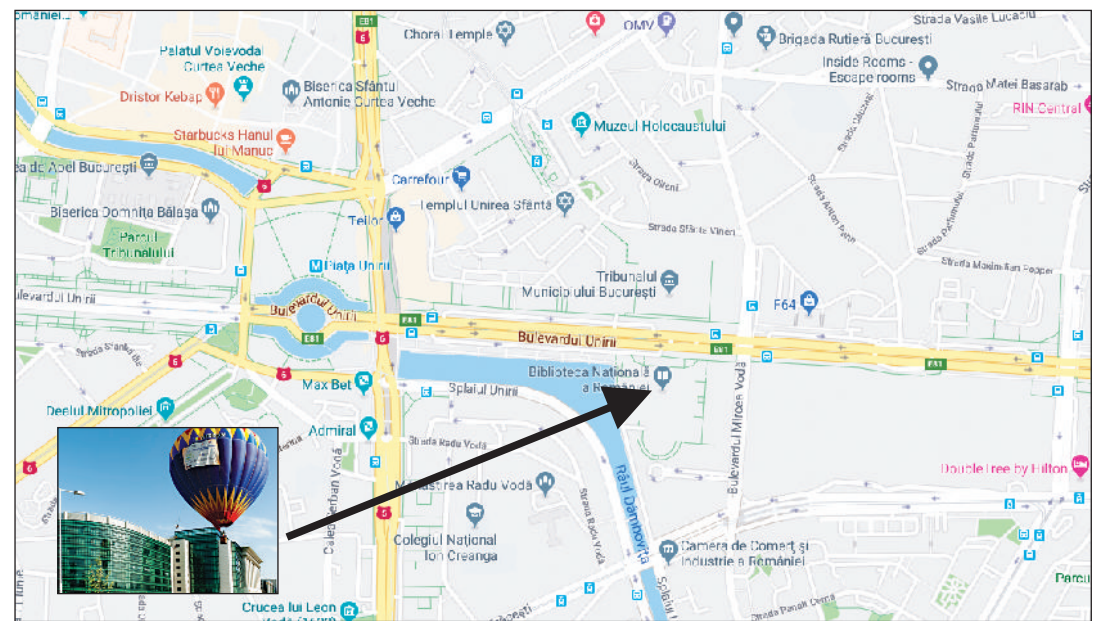
	CLIMA 2019 PACKAGES** (EUR)	STANDARD FEE	ON SITE FEE	EARLY REG*
1	REHVA AM & CLIMA FULL PACKAGE - CONGRESS FULL-REGISTRATION, 3 DINNERS, 5 NIGHTS ACCOMMODATION 5*HOTEL	1345	1715	1196
2	3 DAYS FULL PACKAGE - FULL REGISTRATION, 3 DINNERS, 3 NIGHTS ACCOMMODATION 5*	1075	1335	956
3	3 DAYS REGISTRATION, NON-STUDENT	440	490	396
4	1/2/3 DAYS REGISTRATION, STUDENT (UNDER 26)	160	200	144
5	1/2/3 DAYS REGISTRATION, ACCOMPANYING PERSON	160	200	144
6	2 DAYS REGISTRATION - 27 & 28 May 2019, NON-STUDENT	332	369	299
7	2 DAYS REGISTRATION - 27 & 29 May 2019, NON-STUDENT	332	369	299
8	2 DAYS REGISTRATION - 28 & 29 May 2019, NON-STUDENT	332	369	299
9	1 DAY REGISTRATION - 27 May 2019, NON-STUDENT	195	230	176
10	1 DAY REGISTRATION - 28 May 2019, NON-STUDENT	195	230	176
11	1 DAY REGISTRATION - 29 May 2019, NON-STUDENT	195	230	176
12	1 ADDITIONAL ACCEPTED PAPER	90	90	90
13	2 ADDITIONAL ACCEPTED PAPERS	169	169	169
14	REHVA course 1 - NZEB design: approach, principles and best practices	75	TBC	70
15	REHVA course 2 - How to design hybrid GEOTABS buildings' components	75	TBC	70
16	ASHRAE course - Update on Refrigerants: Past, Present and Future	TBC	TBC	TBC
17	AIR/UAUIM course - ADAPTATION & MITIGATION OF CLIMATE CHANGE EFFECTS WITH THE SCOPE OF PUBLIC SPACE VALUE IMPROVEMENT	70	85	65
18	CLIMA 2019 PROCEEDINGS (all full articles on hard copy)	195	195	NA
19	CLIMA 2019 PROCEEDINGS (all full articles on memory stick)	35	35	NA
20	WELCOME RECEPTION + CONCERT	75	90	65
21	AIR's PRESIDENT DINNER	75	90	65
22	GALA DINNER	80	95	70
23	ALL 3 DINNERS PACKAGE	210	250	185
24	TECHNICAL TOUR 1 - ELI-NP	30	40	20
25	TECHNICAL TOUR 2 - National Olympic Swimming Center	30	40	20
26	„LA BELLE EPOQUE“ TOUR BY DAY, 4-5 h (Sunday, May 26)	55	65	45
27	COOKING TRADITIONAL ROMANIAN FOOD, 4 h (Monday, May 27)	75	85	65
28	NATURE & CULTURE AROUND BUCHAREST: SNA GOV, FULL DAY (Monday, May 27)	75	90	65
29	ROMANIAN CASTLES TOUR, FULL DAY (Tuesday, May 28)	100	115	90
30	“THE LITTLE PARIS” TOUR, 4-5 h (Tuesday, May 28)	50	60	40
31	HALF DAY IN THERME BUCHAREST, 4-5 h (Wednesday, May 29)	45	55	35
32	BUCOVINA MONASTERIES, 3 DAYS (May 29 - 31)	380	410	350
33	EXPLORING DANUBE DELTA, 3 DAYS (May 29 - 31)	380	410	350
34	3 PEOPLE & 3 DAYS EXTRA-FULL PACKAGE - 3 FULL REGISTRATIONS & 3 DINNERS & 3 ACCOMMODATIONS 5* MARRIOTT HOTEL	3225	4005	2868
35	5 PEOPLE & 3 DAYS EXTRA-FULL PACKAGE - 5 FULL REGISTRATIONS & 3 DINNERS & 5 ACCOMMODATIONS 5* MARRIOTT HOTEL	5375	6675	4780
36	ONLY REHVA AM - 2 NIGHTS ACCOMMODATION 5* HOTEL	330	290	270
37	CLIMA 2019 virtual registration - maximum 10 attendees/devices	2745	2745	2745
38	CLIMA 2019 virtual registration - at least 11 attendees/devices	4120	4120	4120

* Early registration until 22nd of March 2019

** REHVA Members will benefit from 10% discount for selected packages. (a random check of the participants membership could be done by CLIMA 2019 organizers). Please appropriately select your NATIONAL ASSOCIATION NAME in your CLIMA 2019 website account (Participant Information/REHVA member)

*** ALL PRICES INDICATED BELOW ARE WITHOUT VAT (19%)

Romanian National Library, CLIMA 2019 venue



OVERALL PROGRAM

	Sunday, 26 th May	Monday, 27 th May	Tuesday, 28 th May	Wednesday, 29 th May	
8:30-10:00	REHVA AM activities	PLENARY SESSION 2, 90'	PLENARY SESSION 3, 90'	PLENARY SESSION 4, 90'	8:30-10:00
10:00-10:30		Coffee break, 30'	Coffee break, 30'	Coffee break, 30'	10:00-10:30
10:30-13:00		Presentations& workshops& courses, 150'	Presentations& workshops& courses, 150'	Presentations& workshops& courses, 150'	10:30-13:00
13:00-14:00		Lunch, 60'	Lunch, 60'	Lunch, 60'	13:00-14:00
14:00-15:30		PLENARY SESSION 5, 90'	PLENARY SESSION 6, 90'	PLENARY SESSION 7, (CLIMA 2019 awards, closure speech...), 150'	14:00-15:30
15:30-16:00		Coffee break, 30'	Coffee break, 30'		15:30-16:00
16:00-16:30		Presentations& workshops& courses, REHVA Student Competition-120'	Presentations& workshops& courses, World Student Competition-120'		16:00-16:30
16:30-18:00	Opening Ceremony & Concert, 150'			Departure for after congress tours	16:30-18:00
18:00-19:00					18:00-19:00
19:00-22:00	Welcome Dinner, National Library	AIIR's President Dinner, UTCB Campus	REHVA Gala Dinner, Diplomatic Club		19:00-22:00
	Sunday, 26 th May	Monday, 27 th May	Tuesday, 28 th May	Wednesday, 29 th May	

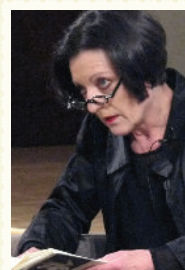
TIMETABLE FOR WORKSHOPS, STUDENT COMPETITIONS & COURSES

	8:30-10:00	10:00-10:30	10:30-11:00	11:00-11:30	11:30-12:00	12:00-12:30	12:30-13:00	13:00-14:00	14:00-15:30	15:30-16:00	16:00-16:30	16:30-17:00	17:00-17:30	17:30-18:00	
Monday, 27 th May	PLENARY SESSION 2	Coffee break	1. BRE					LUNCH	PLENARY SESSION 3	5. EPEE & EVIA					Monday, 27 th May
2. BELIMO					Coffee break	6. EPB CENTER & REHVA				B2B					
3. EUROVENT CERTITA						7. QUANTUM				B2B					
4. SHASE & REHVA			B2B			8. TRIPLE A RENO & MOBISTYLE				B2B					
REHVA course nZEB					REHVA STUDENT COMPETITION										
Tuesday, 28 th May	PLENARY SESSION 4	Coffee break	9. HALTON					LUNCH	PLENARY SESSION 5	13. RHOSS					Tuesday, 28 th May
10. FIT-TO-NZEB+GRUNDFOS+Ibroad					Coffee break	14. GEOTABS				B2B					
11. eu.bac & REHVA			B2B			15. G2Elab + UTCB/OAER (TBC)									
12. CCHVAC & REHVA			B2B			AIR&UAUIM course									
REHVA course hybridGEOTABS					HVAC WORLD STUDENT COMPETITION										
Wednesday, 29 th May	PLENARY SESSION 6	Coffee break	16. IMTECH & ALLBIM.net					LUNCH	PLENARY SESSION 7			Departure for after congress tours			Wednesday, 29 th May
17. TESTO															
18. ISIAc & REHVA			B2B												
19. EUROHEAT & POWER (TBC)															
20. DAIKIN Award Poster Competition															
	8:30-10:00	10:00-10:30	10:30-11:00	11:00-11:30	11:30-12:00	12:00-12:30	12:30-13:00	13:00-14:00	14:00-15:30	15:30-16:00	16:00-16:30	16:30-17:00	17:00-17:30	17:30-18:00	

ROMANIAN WORLD
KNOWN PERSONALITIES

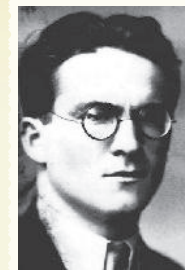
EUGÈNE IONESCO

was a Romanian-French playwright and one of the foremost figures of the French Avant-garde theatre. Beyond ridiculing the most banal situations, Ionesco's plays depict the solitude and insignificance of human existence in a tangible way.



HERTA MÜLLER

is a Romanian-born German novelist, poet, essayist and recipient of the 2009 Nobel Prize in Literature. Her works have been translated into more than twenty languages.



MIRCEA ELIADE

was historian of religion, fiction writer, philosopher and professor at the University of Chicago. He established paradigms in religious studies that persist to this day. His theory that hierophanies form the basis of religion, splitting the human experience of reality into sacred and profane space and time, has proved influential.

SOCIAL EVENTS

26 May 2019: Welcome Reception And Concert

75 euro + VAT / person

LOCATION: National Library of Romania
TIME: 6.30-9 PM
DRESS CODE: Cocktail Attire
PROGRAM: concert and standing cocktail



27 May 2019: AIIR's PRESIDENT DINNER

75 euro + VAT / person

LOCATION: Faculty for Building Services Engineering
TIME: 7-11 PM,
DRESS CODE: Casual Attire
PROGRAM: Romanian traditional evening, including surprises.
RATE: transportation included from National Library and JW Marriott Bucharest Grand Hotel. Students are welcomed to attend.



28 May 2019: GALA DINNER

80 euro + VAT / person

LOCATION: Diplomatic Club
TIME: 7-11 PM
DRESS CODE: Black Tie
PROGRAM: special dinner, concert and many surprises
RATE: transportation included from National Library and JW Marriott Bucharest Grand Hotel.



SATELLITE EVENTS

"Bucharest, especially, has the most toxic twilights, in every season. It is hard to be left alone, to not fall in love and to not seek your soul mate in a city where the sun sets with such a deep melancholia..."

Mircea Eliade

26 May 2019: La Belle Epoque Tour (4-5 hrs)

Imagine yourself in the late 19th century, in a romantic era of peace & prosperity called the "Belle Epoque". Bucharest was a city where the West met the East, instantly charming travelers with its multicultural diversity, Bohemian lifestyle and gorgeous architecture. The flourishing city was experiencing the greatest cultural boom of its history, with King Carol the 1st being the mastermind behind it, turning Bucharest into a Paris of the East.

Visit to Parliament Palace (entrance) - Due to its immense physical, psychic and historic stature, is perhaps the most controversial building in Romania, an extravagant and expensive building project. Claiming superlative as the world's second-largest building by surface area (after the spacious US Pentagon), the palace boasts 12 stories, 1,100 rooms, a 328-ft-long lobby and 8 underground levels, including an enormous nuclear bunker.

Services include: transportation by modern mini bus (including parking and road taxes), English speaking guide.

Tour rate:
55 euro + VAT / person
Minimum 15 people / group

IMPORTANT NOTES:

Occasionally, due to official events and large conferences, the Parliament Palace may be closed for visitors.

27 May 2019: Nature & Culture around Bucharest (full day)

Kayaking on Snagov Lake

Snagov (located at 40 km from Bucharest) is a place with great history where famous names of writers, actors and athletes have worked and have been inspired on its shores. Strategically located close to the capital Bucharest and having a special microclimate, made the Snagov Lake become a place for refuge, entertainment and relaxation.

Visit Snagov Monastery located on an island on Snagov Lake, north of Bucharest; the monastery was built by Mircea the Elder (the grandfather of the famous Dracula) who made also the first documentary attestation of this church in 1408. This oasis is the perfect starting point place for a nature getaway: 2-3 hours kayaking on the lake or horse riding. There will be kayaks for 1 pers and for 2 pers (enough for all the people at once). Life vests and guide included. After 2-3 hours of nature getaway, return to the land and enjoy a picnic in the



Tour rate:
75 euro + VAT / person
Minimum 15 people / group

forest. Services include: transportation by modern mini bus (incl. parking and road taxes), English speaking guide, entrance fee, Kayaks with paddles; these kayaks are specially designed for commercial tours, offering even inexperienced people, great stability and direction; life vests with ergonomic design, professional instructor.

27 May 2019: Cooking Traditional Romanian Food (4 hrs)

Discover the flavor of Romanian Cuisine in a real entertaining cooking class.

Fun Cooking - with famous chefs, then enjoy delicious food together!

Briefing: presentation made by the chef, team selections, presentation of the equipment and ingredients, discussion about the Romanian recipe and the specific culinary area to which it belongs.

Cooking: participants will have on the island all cooking utensils and ingredients already prepared; the chef will present step by step how to prepare the recipes.

The participants can enjoy a meal together with the food they cooked. Romanian Wine will be also offered to accompany the food.

Services include: transportation by modern mini bus (including parking and road taxes), English speaking guide, cooking lesson, lunch.



Tour rate:
75 euro + VAT / person
Minimum 15 people / group

28 May 2019: The Little Paris Tour of Bucharest (4-5 hrs)

Bucharest, a city once called the Little Paris, could have been much more if not for the communist era. You will easily see this for yourself during this private communist tour of Bucharest, a tour marked by emotional visual contrasts, revealing the absolute opposition of two historical periods: the Belle Epoque vs. the Communist Era.

The Bucharest Communist Tour is more than a visual experience - it's a story that takes you through 45 years of communism, allowing you to see beyond the city's colorful present: Stalin and the enslavement of Eastern Europe, the genocide of KGB's Secret Police, the Siberian deportation of farmers who refused to "donate" their lands to the state, the eradication of culture, free press or private property.

The Museum of the Romanian Peasant (entrance), also known as the Peasant Museum (Muzeul Taranului) is another place where visitors can enter into the old world of the traditional Romania.

Visit the Ceausescu Mansion (entrance) - the home of the former Romanian dictator

The Ceausescu Palace, also known as the "Spring Palace", is a luxurious building where Romania's former Communist leader, Nicolae Ceausescu, and his family, lived between 1965 and 1989. The Palace was built between 1964 and 1965, and it is surrounded by 14,830 square meters of land.

Services include: transportation by modern mini bus (including parking and road taxes), English speaking guide, entrance fee.



Tour rate:
50 euro + VAT / person
Minimum 15 people / group

AFTER-CONGRESS TOURS

DANUBE DELTA
3 DAYS (29 - 31 May)

Day 1- 29.05.2019. Depart towards Danube Delta.

Start the day with a drive towards Tulcea Harbor. Guided day boat trip in the Danube Delta, departing from Tulcea and destination point Mila 23, the village in the middle of the Danube Delta. Departure is from Tulcea, downstream on Tulcea branch until the intersection with Canal 36 (in about 10 minutes after departure we are already in the Delta), we follow Channel 36 until the intersection with Sireasa Channel, a deltaic area, rich in wildlife (birds and mammals). Continue the trip on Garla Sontea including flooded areas, full of birds and vegetation. Here we have the opportunity to see white and yellow water lilies, swans, coots, ducks, geese, spoonbills, godwits, ibises and pelicans.

Arrival at Mila23. Lunch in Mila23 - Traditional fish dinner. Overnight in Mila23.

Day 2 - 30.05.2019

Boat trip to Letea Forest. Letea Forest is a great tourist attraction; you cannot say you visited Danube Delta without visiting this unique wonder in the world. Alternate strips of desert vegetation specific to these areas and stripes of



ancient oak forest and meadow with specific vegetation of subtropical forest, Letea Forest is the northernmost subtropical forest in Europe. Besides the 10 species of orchids, asparagus and other subtropical plants we can see poplar, ash, linden and other trees. Wild horses from Letea are certainly a special attraction of this natural reserve, the first one in Romania. On all our tours, we try to find free herds grazing on the meadows and woods and to make acquaintance with the wonderful animals.

Lunch in Mila23. In the evening we will have a traditional fish dinner. Overnight in Mila23.

Day 3 - 31.05.2019

Head back to Tulcea, following the same route as day 1. Return to Bucharest.

NOTE: Long drive from Bucharest (about 4-5h)

Services include: transportation by modern mini bus (including parking and road taxes), English speaking guide, entrance fee, accommodation in 3-4 stars hotels for 2 nights, meals. Tour program may be subject to changes.

BUCOVINA MONASTERIES
3 DAYS (29 - 31 May)

Day 1- 29.05.2019

Departure towards Gura Humorului, in the very heart of Bucovina, with stops on the way. Lunch on the way to Gura Humorului. Dinner and overnight at hotel in Gura Humorului.



Tour rate: starting
380 euro + VAT / person
Minimum 10 people / group

Day 2 - 30.05.2019

Visit Humor Monastery (entrance) - set on a hill's top in one of the most fascinating of the Suceava county landscapes. The Church of the Humor Monastery is a famous foundation of the Middle Ages, being built in 1530. Continue with a stop at Arbore Monastery (entrance). This UNESCO-protected church in the village of Arbore receives a fraction of the visitors of the other painted monasteries and hence feels more private and special. The small scale allows you to study the paintings up close. The monastery dates from 1503.

Moldovita Monastery (entrance) - built in 1532 in the heart of Moldovita village, is one of the most beautiful and valuable church and historical monuments; among old objects kept in Moldovita Monastery we name the two epitaphs from Stephan the Great period, the Efreem book of psalms and other manuscripts.

Visit to Voronet Monastery (entrance) - a nun monastery, it is probably the most accomplished sample of artistic achievement in Moldavian architecture and painting. Voronet is considered by many to be the "Sistine Chapel of the East". In addition, "Voronet Blue" has been added to the lexicon of art alongside colors like the "Titan Red" of Rubens and "Veronese Green", considered to be unique.

Lunch at local restaurant. Transfer to Piatra Neamt, considered one of the most picturesque cities in Romania. Dinner and overnight at hotel in Piatra Neamt.

Day 3 - 31.05.2019. Return to Bucharest, with stops on the way.

NOTE: Long drive from Bucharest to Gura Humorului (450km, about 6-7h) and from Piatra Neamt to Bucharest (370km, about 5-6h)

Services include: transportation by modern mini bus (including parking and road taxes), English speaking guide, entrance fee, accommodation in 3-4 stars hotels in the mentioned cities, meals. Tour program may be subject to changes.

Tour rate: starting
380 euro + VAT / person
Minimum 10 people / group

ROMANIAN WORLD
KNOWN PERSONALITIES

SIMONA HALEP

is the former world No. 1 on the WTA Tour, a ranking she first achieved in October 2017, and has won 18 WTA singles titles and one WTA doubles title. She won her first 6 WTA titles in 2013 (a feat that was last achieved by Steffi Graf in 1986).



NADIA COMĂNECI

is a five-time Olympic gold medalist considered the best gymnast of all time. "The Goddess from Montreal" is the first to be awarded a perfect score of 10.0 at the Olympic Games (1976) where she received six more perfect 10s.



GEORGHE HAGI

is a former professional footballer, considered one of the best attacking midfielders in the world during the '80s and '90s and the greatest Romanian footballer of all time. Galatasaray fans called him "Comandante" and Romanians call him "The King".



SPONSORS



EXHIBITORS



WORKSHOP ORGANISERS



INSTITUTIONAL INTERNATIONAL PARTNERS



INSTITUTIONAL ROMANIAN PARTNERS



MEDIA PARTNERS

